

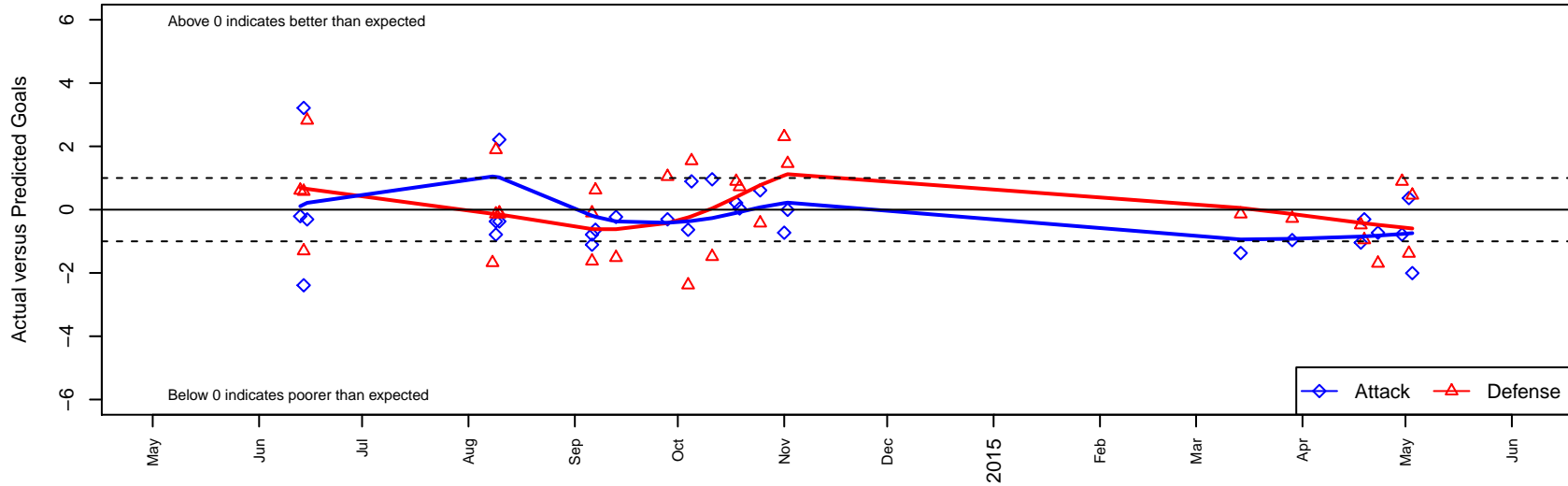
WA East Team Sky G02

Washington East SC
 Spokane, WA
 G02 total strength=423
 attack=0.26 defense=0.28
 fall league = PSPL-Inland Div 1 U12
 spr league = Spr PSPL-Inland Div 1 U12

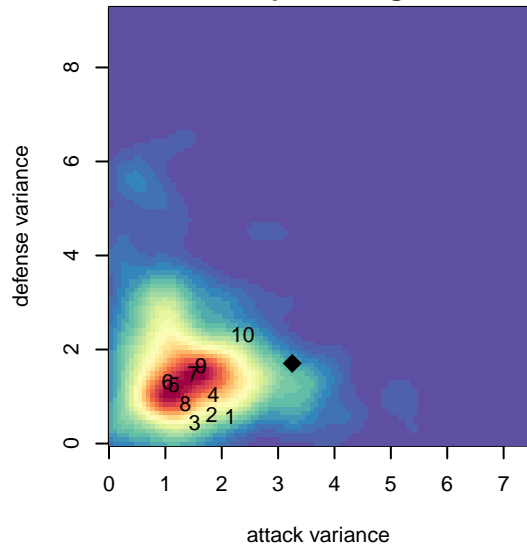
alt names used:
 WASHINGTON EAST GU12 TEAM SKY (WA)
 Washington East Girls U12 Kaiel Sky
 Washington East - Team Sky
 Washington East SC Team Sky
 Washington East SC Team Sky

Venues played:
 2014 Olivia Chaffin GU12
 2014 Les Schwab NW Cup U12 Silver U12
 2014 Pend Oreille Cup GU12 11v11
 2014 PSPL-Inland Div 1 U12
 2014 Spr PSPL-Inland Div 1 U12

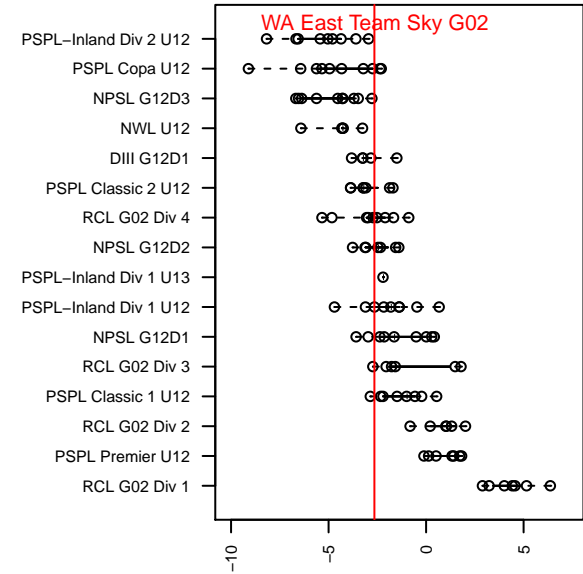
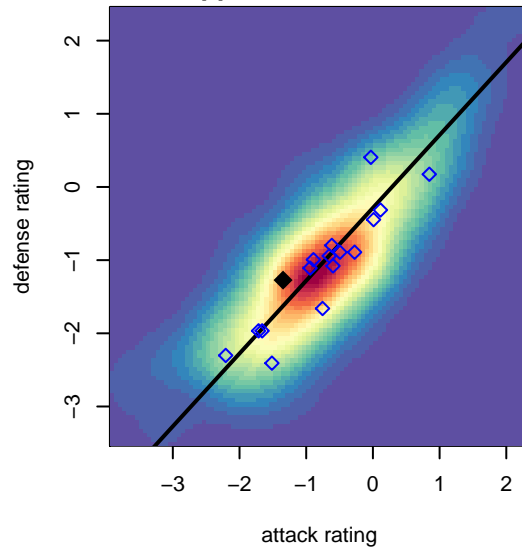
WA East Team Sky G02
 Dots are actual minus expected GF (blue circles) and GA (red triangles).
 Blue line is smoothed change in attack strength. Red is smoothed change in defense strength.



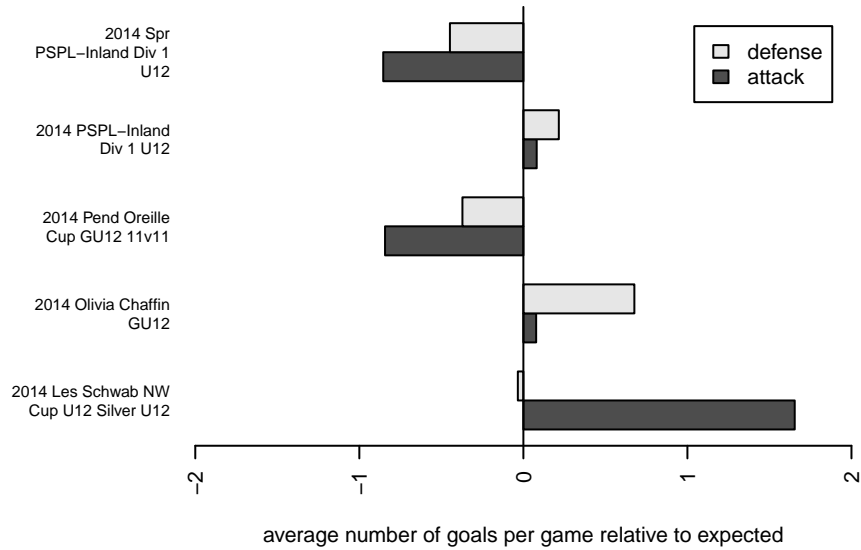
**attack and defense variance (black dot)
relative to other teams
and top 10 in region**



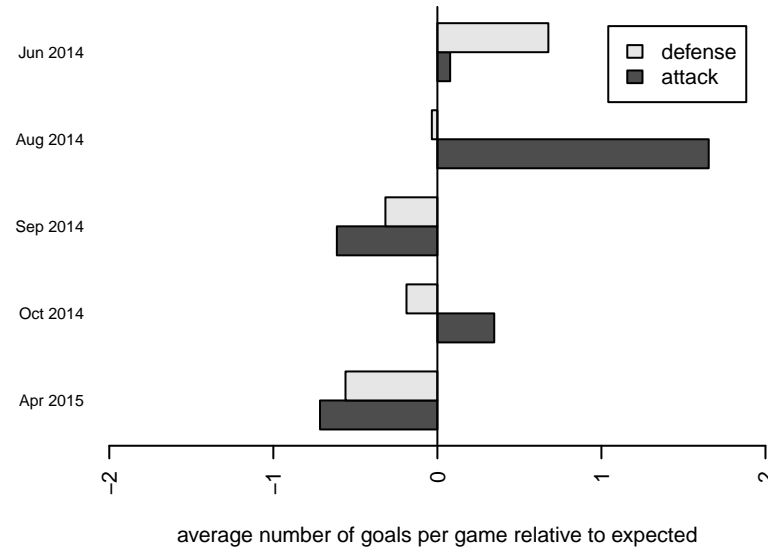
**attack and defense rating
relative to others at age
and all opponents in last 13 months**



Performance relative to 13 month average



Performance relative to 13 month average



date	home		away		venue	pred.home	pred.away
2015-05-03	WA East Team Sky G02	0	Walla Walla United SC Lightning G02	1	2014 Spr PSPL-Inland Div 1 U12	2.01	1.46
2015-05-02	Academy Idaho Cads G02	5	WA East Team Sky G02	1	2014 Spr PSPL-Inland Div 1 U12	3.62	0.63
2015-04-30	WA East Team Sky G02	0	Breakers Merritt G02	1	2014 Spr PSPL-Inland Div 1 U12	0.79	1.89
2015-04-23	FC Spokane Black G02	5	WA East Team Sky G02	0	2014 Spr PSPL-Inland Div 1 U12	3.30	0.73
2015-04-19	Spokane Scotties Klein G02	4	WA East Team Sky G02	0	2014 Spr PSPL-Inland Div 1 U12	3.05	0.30
2015-04-18	WA East Team Sky G02	0	Cheney Storm FC G02	3	2014 Spr PSPL-Inland Div 1 U12	1.04	2.52
2015-03-29	WA East Team Sky G02	0	Spokane Foxes Red G02	2	2014 Spr PSPL-Inland Div 1 U12	0.96	1.72
2015-03-14	XiFA 2021 G02	2	WA East Team Sky G02	0	2014 Spr PSPL-Inland Div 1 U12	1.86	1.37
2014-11-02	Walla Walla United SC Lightning G02	0	WA East Team Sky G02	2	2014 PSPL-Inland Div 1 U12	1.46	2.01
2014-11-01	WA East Team Sky G02	0	FC Spokane Black G02	1	2014 PSPL-Inland Div 1 U12	0.73	3.30
2014-10-25	WA East Team Sky G02	3	Spokane Foxes Gold G02	1	2014 PSPL-Inland Div 1 U12	2.39	0.58
2014-10-19	WA East Team Sky G02	1	Spokane Foxes Red G02	1	2014 PSPL-Inland Div 1 U12	0.96	1.72
2014-10-18	Breakers Merritt G02	1	WA East Team Sky G02	1	2014 PSPL-Inland Div 1 U12	1.89	0.79
2014-10-11	Cheney Storm FC G02	4	WA East Team Sky G02	2	2014 PSPL-Inland Div 1 U12	2.52	1.04
2014-10-05	WA East Team Sky G02	2	ASE Royal G02	0	2014 PSPL-Inland Div 1 U12	1.11	1.54
2014-10-04	WA East Team Sky G02	0	Academy Idaho Cads G02	6	2014 PSPL-Inland Div 1 U12	0.63	3.62
2014-09-28	Spokane Scotties Klein G02	2	WA East Team Sky G02	0	2014 PSPL-Inland Div 1 U12	3.05	0.30
2014-09-13	XiFA 2022 G03	3	WA East Team Sky G02	1	2014 PSPL-Inland Div 1 U12	1.49	1.23
2014-09-07	Academy Idaho Cads G02	3	WA East Team Sky G02	0	2014 Pend Oreille Cup GU12 11v11	3.62	0.63
2014-09-06	WA East Team Sky G02	0	Spokane Foxes Emerald G02	3	2014 Pend Oreille Cup GU12 11v11	1.11	1.37
2014-09-06	WA East Team Sky G02	0	Breakers Merritt G02	2	2014 Pend Oreille Cup GU12 11v11	0.79	1.89
2014-08-10	Breakers Merritt G02	2	WA East Team Sky G02	3	2014 Les Schwab NW Cup U12 Silver U12	1.89	0.79
2014-08-10	XiFA 2021 G02	2	WA East Team Sky G02	1	2014 Les Schwab NW Cup U12 Silver U12	1.86	1.37
2014-08-09	WA East Team Sky G02	1	XiFA 2021 G02	2	2014 Les Schwab NW Cup U12 Silver U12	1.37	1.86
2014-08-09	WA East Team Sky G02	0	Breakers Merritt G02	0	2014 Les Schwab NW Cup U12 Silver U12	0.79	1.89
2014-08-08	WA East Team Sky G02	12	SSC Shadow Elite Rennaker G02	2	2014 Les Schwab NW Cup U12 Silver U12	4.41	0.32
2014-06-15	WA East Kaiel G02	4	WA East Team Sky G02	0	2014 Olivia Chaffin GU12	6.82	0.31
2014-06-14	Spokane Foxes Gold G02	0	WA East Team Sky G02	0	2014 Olivia Chaffin GU12	0.58	2.39

date	home		away		venue	pred.home	pred.away
2014-06-14	WA East Team Sky G02	8	Sabers Dean G02	2	2014 Olivia Chaffin GU12	4.79	0.70
2014-06-13	FC Spokane White G02	0	WA East Team Sky G02	3	2014 Olivia Chaffin GU12	0.61	3.21